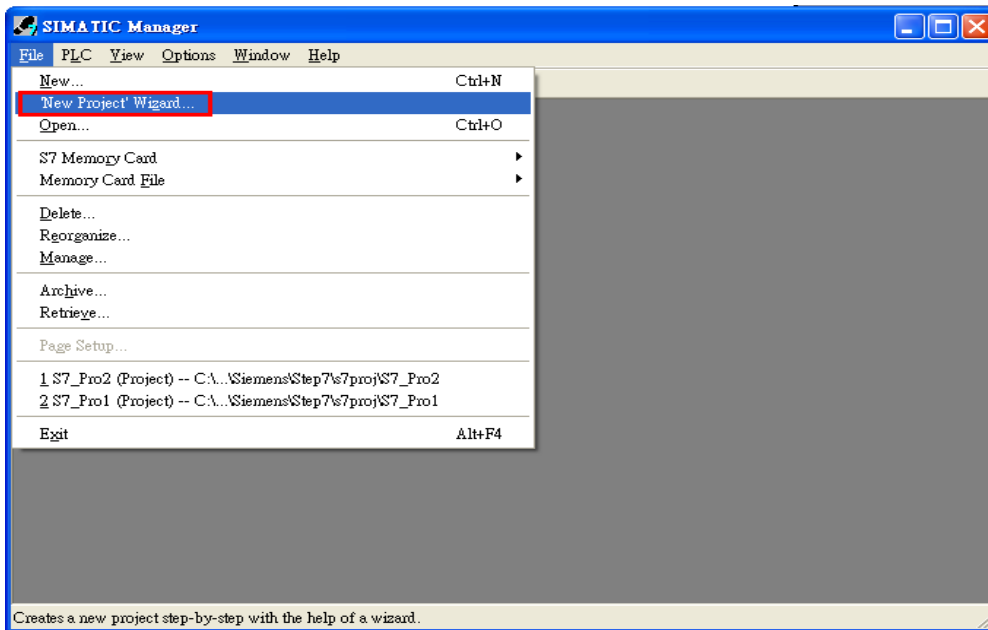


# GW-7553 於 SIMATIC STEP 7 配置說明

1. Double Click “SIMATIC Manager” icon to open “SIMATIC Manager”

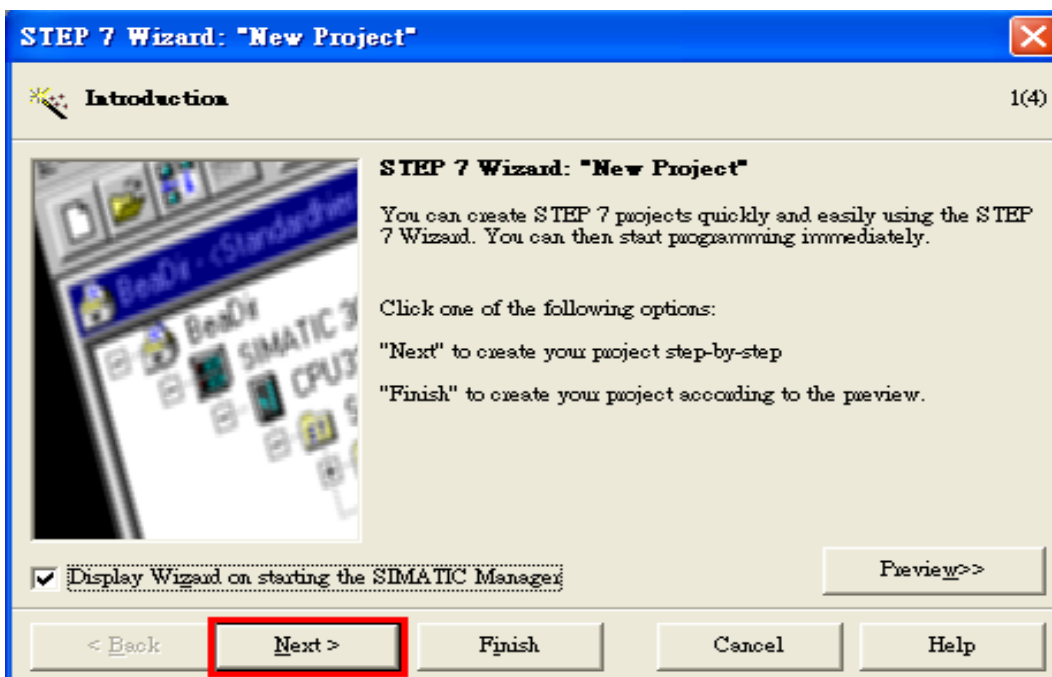


2. Open “New Project Wizard”

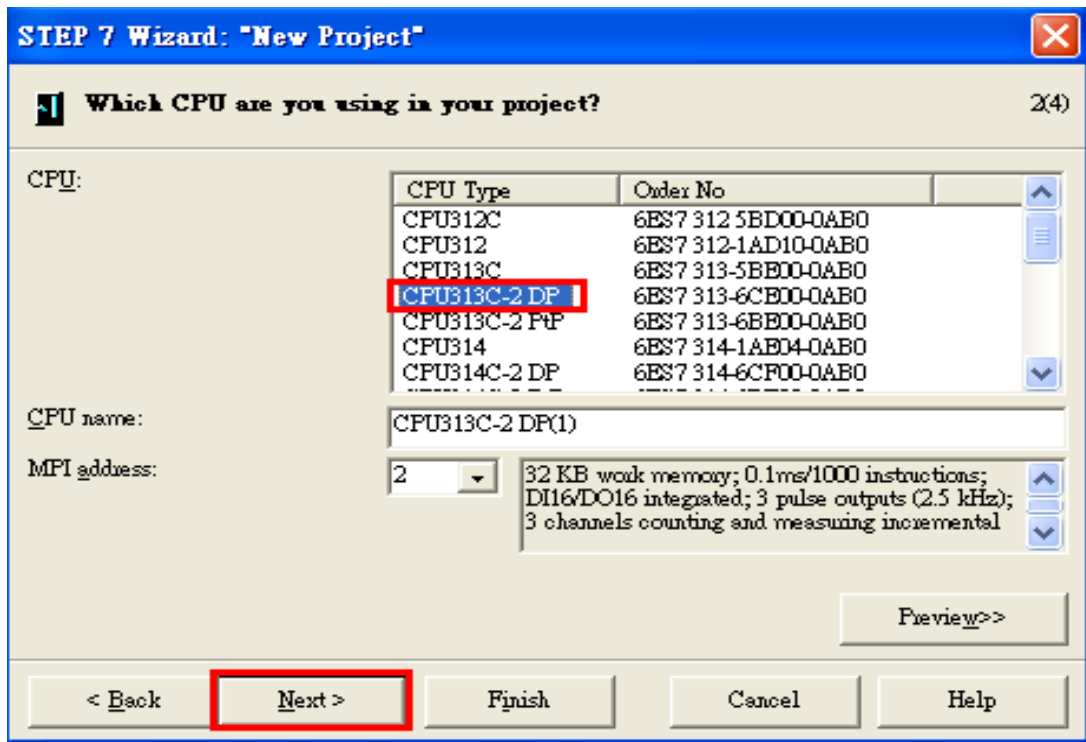


3. Set up Project

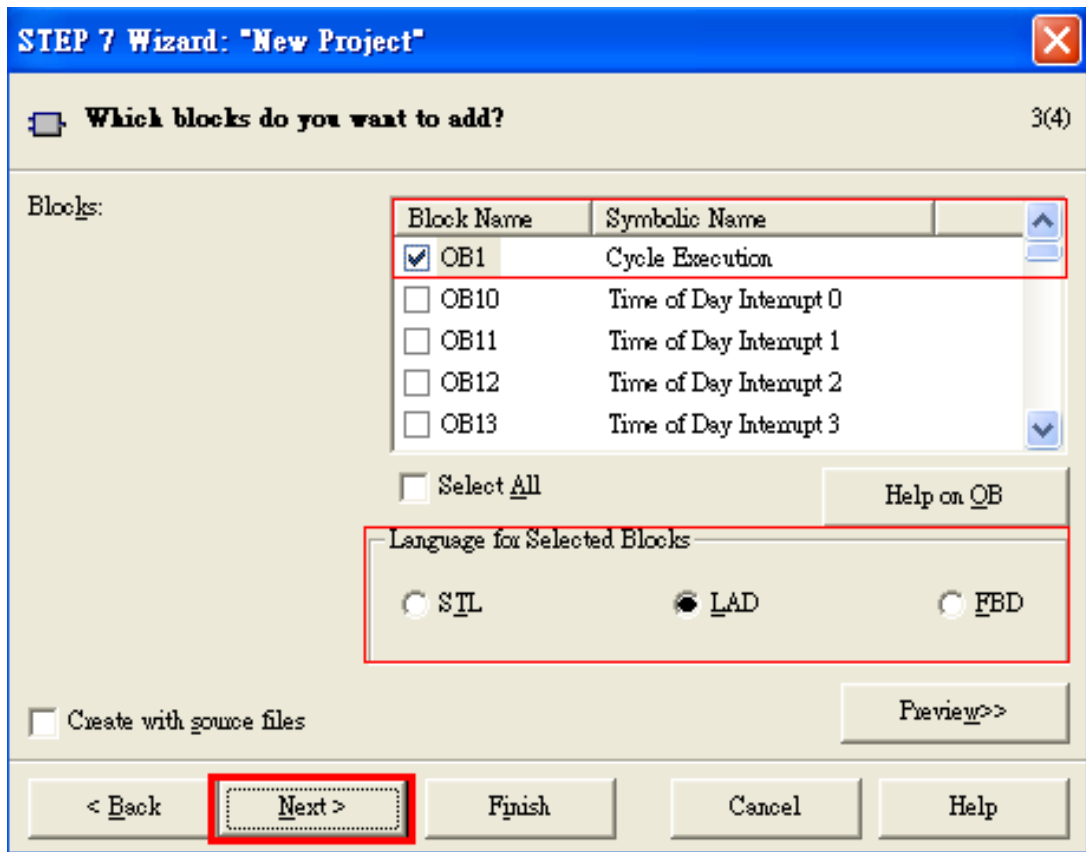
- a. Click "Next"



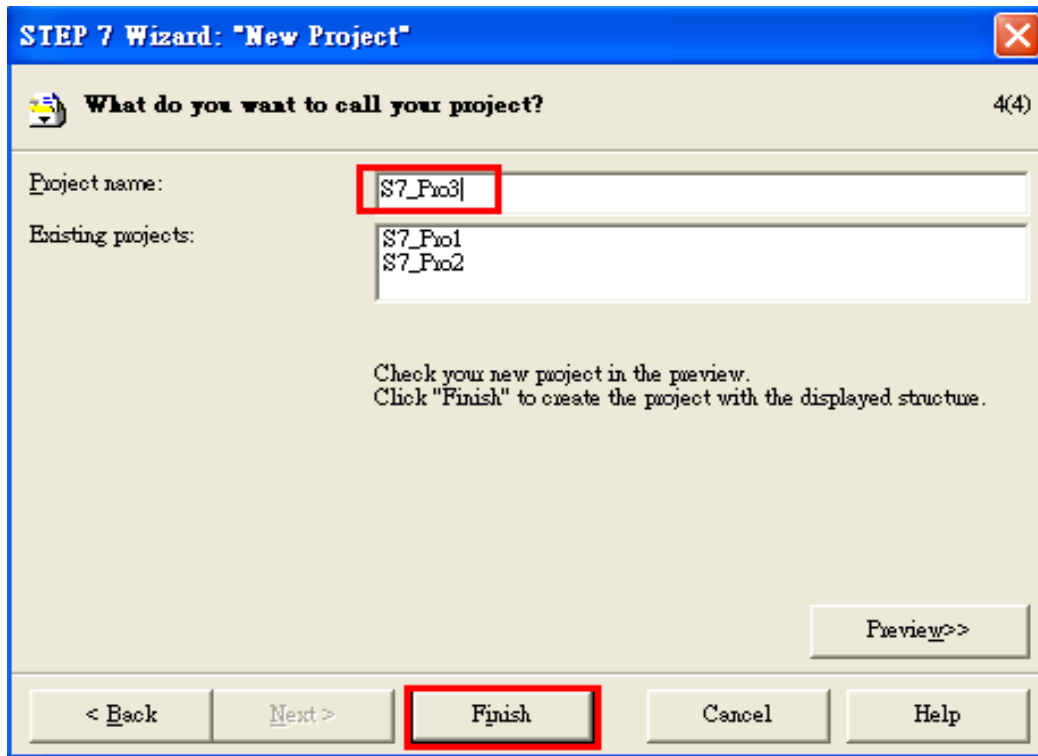
b. Select CPU type then click "Next"



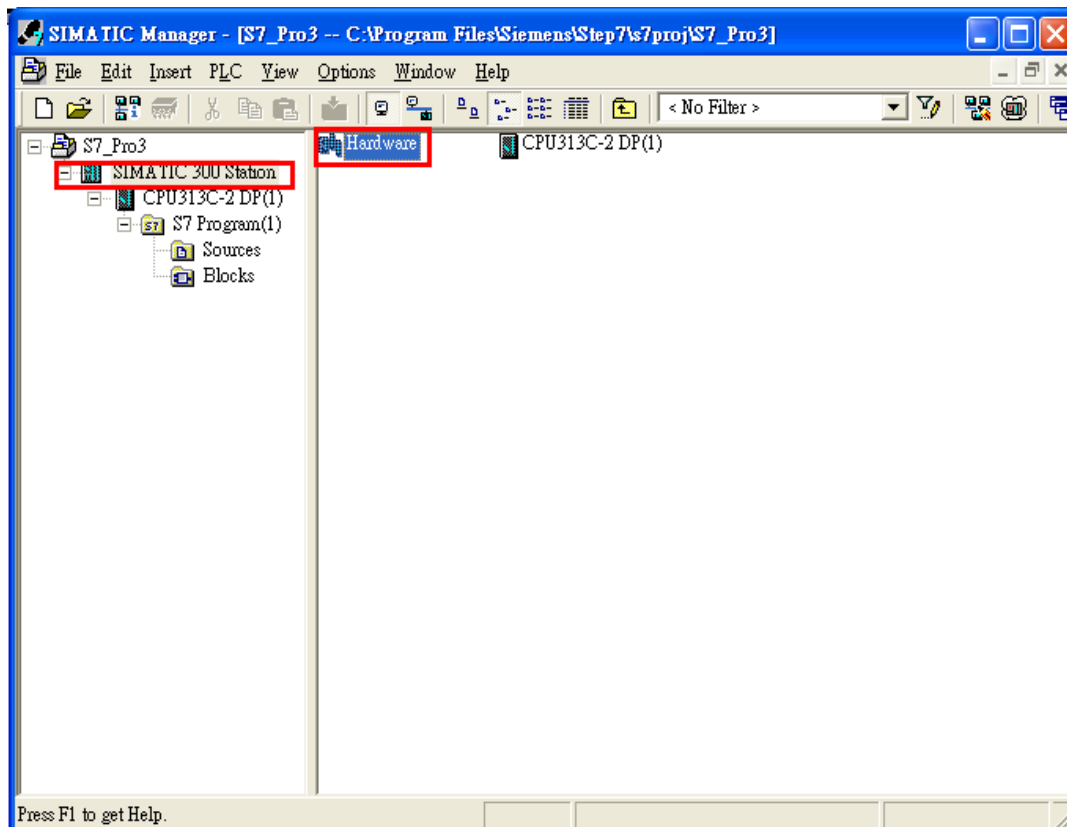
c. Select Blocks and Language for Selected Blocks then click "Next"



d. Set project name then click "Finish"



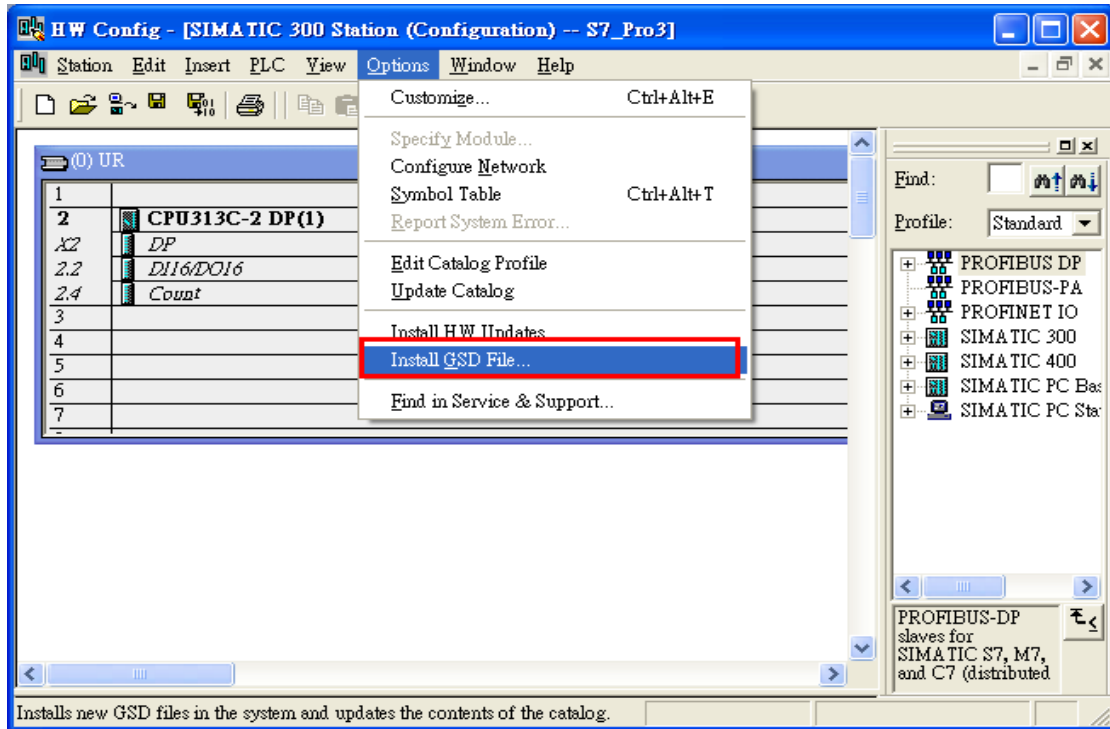
4. Double click "Hardware" to open "HW Config"



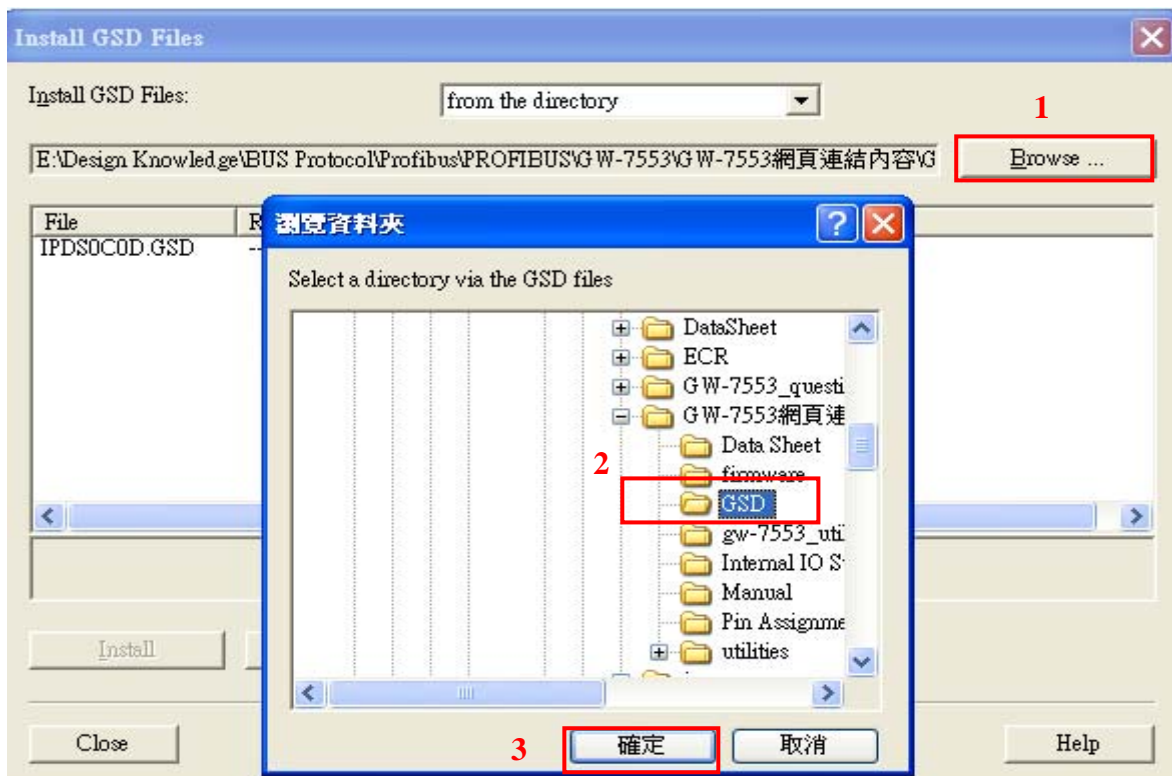
## 5. Install GW-7553 GSD File

[ftp://ftp.icpdas.com/pub/cd/fieldbus\\_cd/profibus/gateway/gw-7553/](ftp://ftp.icpdas.com/pub/cd/fieldbus_cd/profibus/gateway/gw-7553/)

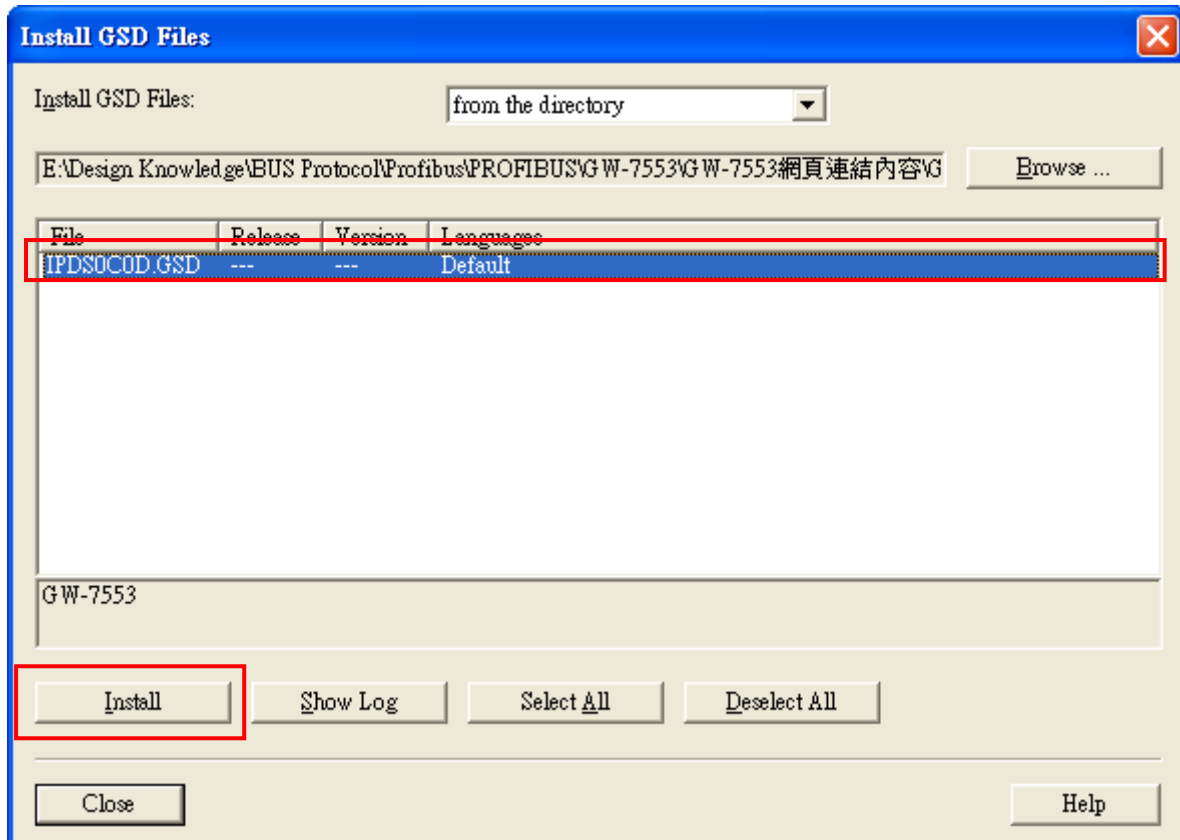
a. Click “Install GSD File”



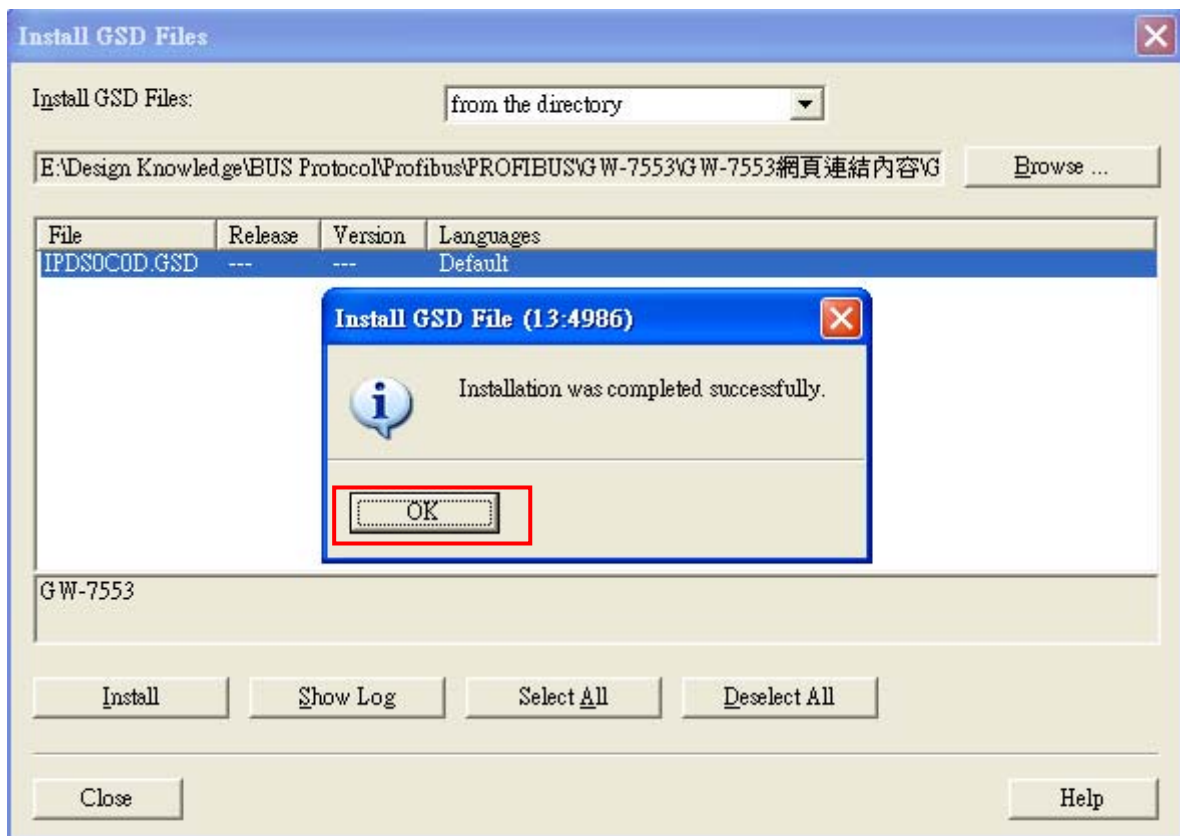
b. Select the directory of GW-7553's GSD file(IPDS0C0D.gsd) and click “OK”



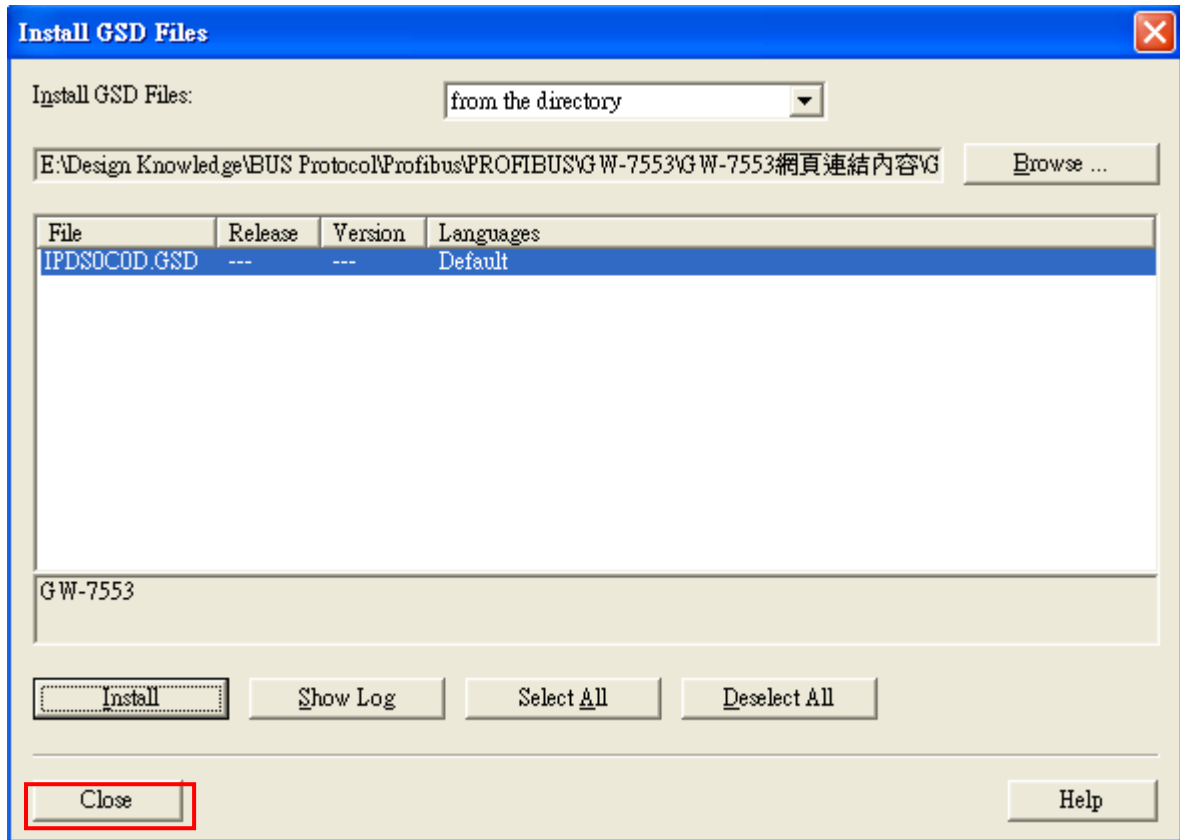
c. Click "Install"



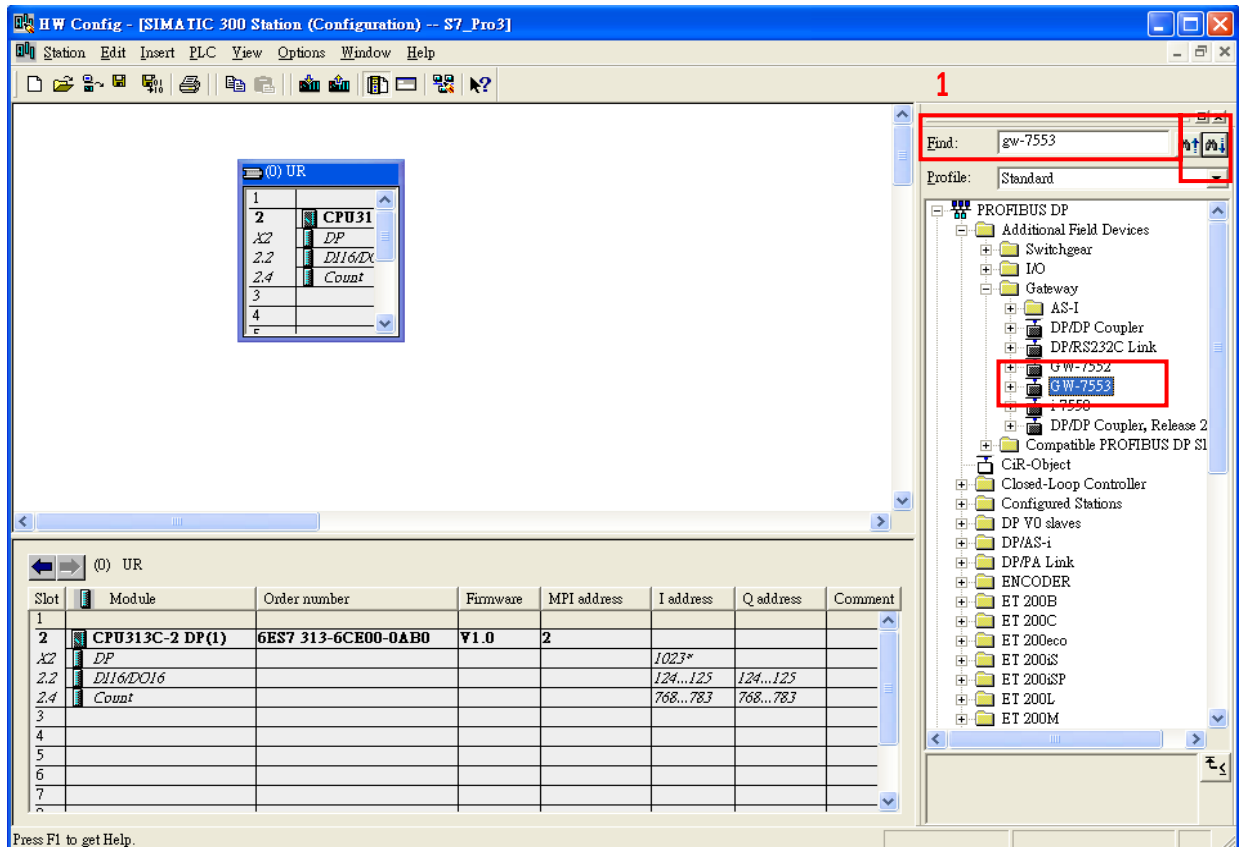
d. Click "OK"



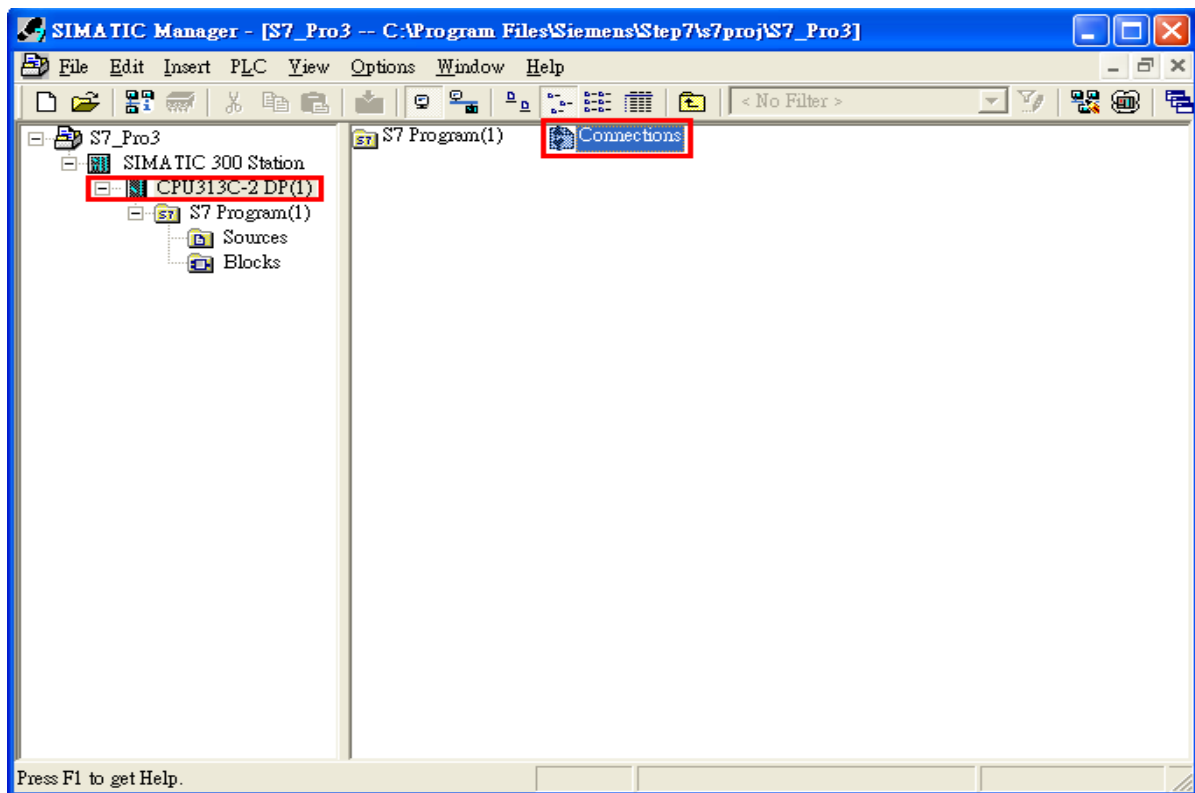
e. Click "Close"



f. Confirm GW-7553's GSD file is available

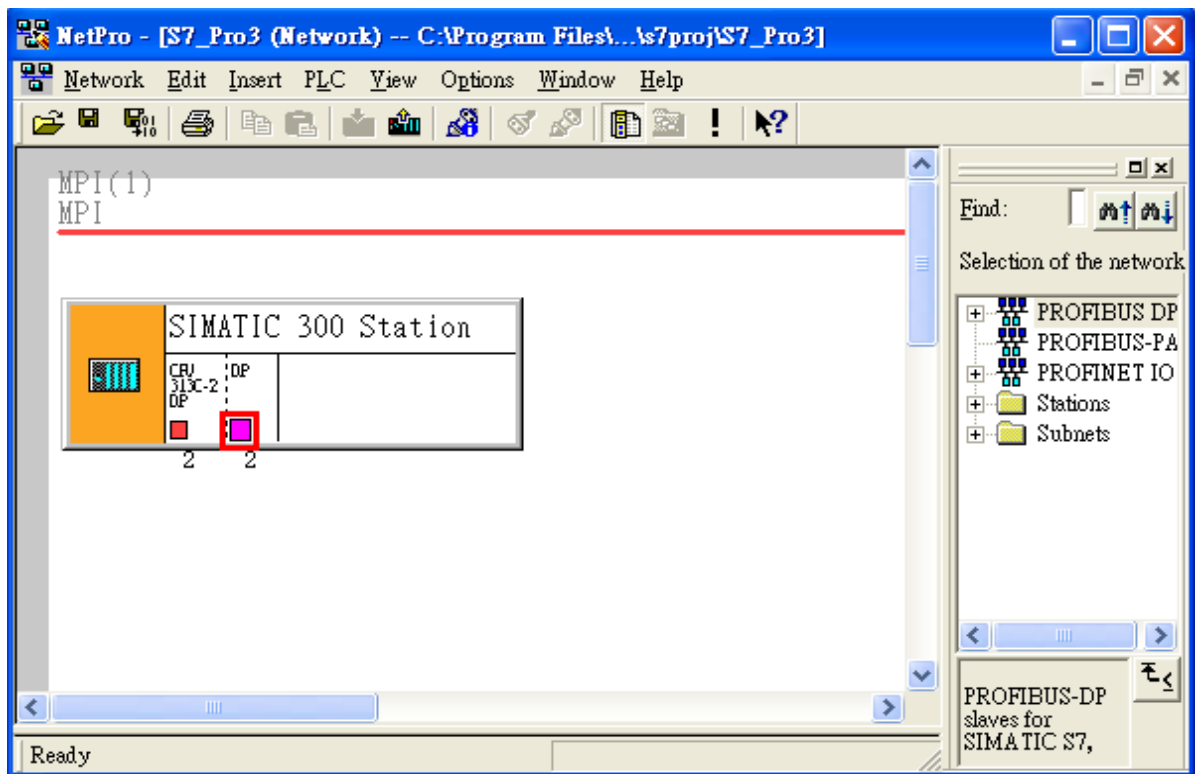


6. Double click “Connections” to open “NetPro”

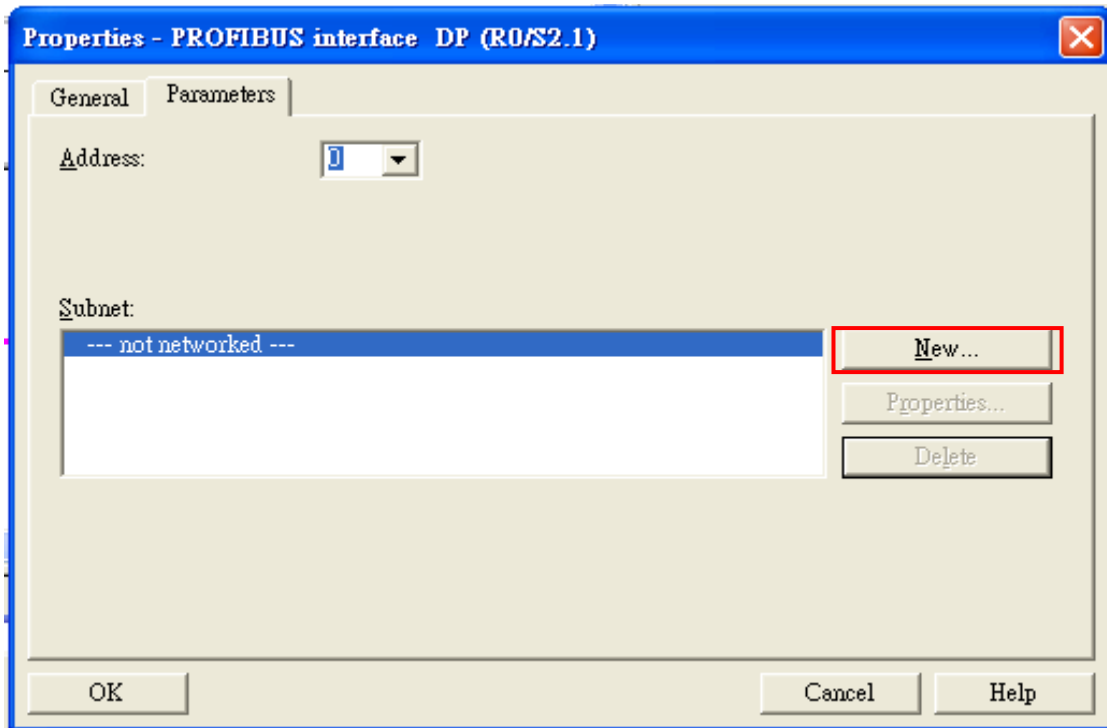


7. Add PROFIBUS subnet

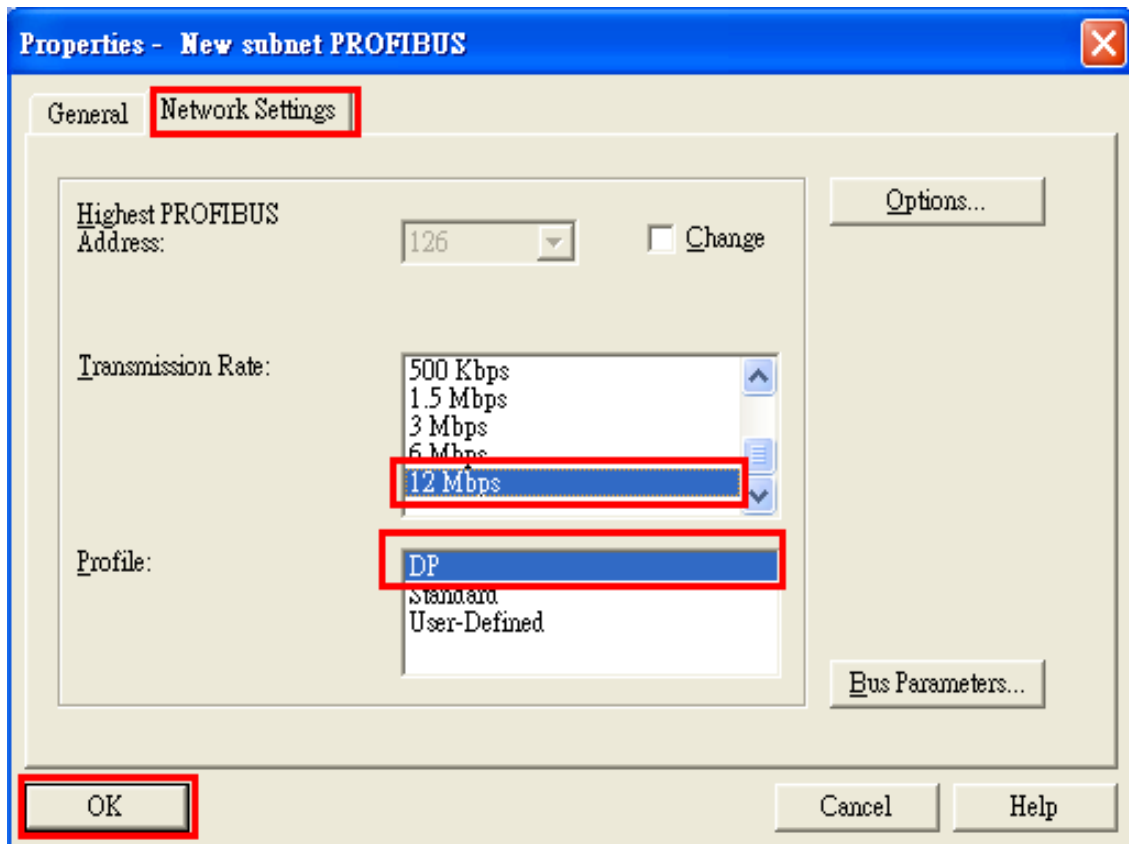
- a. Double click the block of the DP



b. Set mater station's address as '0' then click "New"

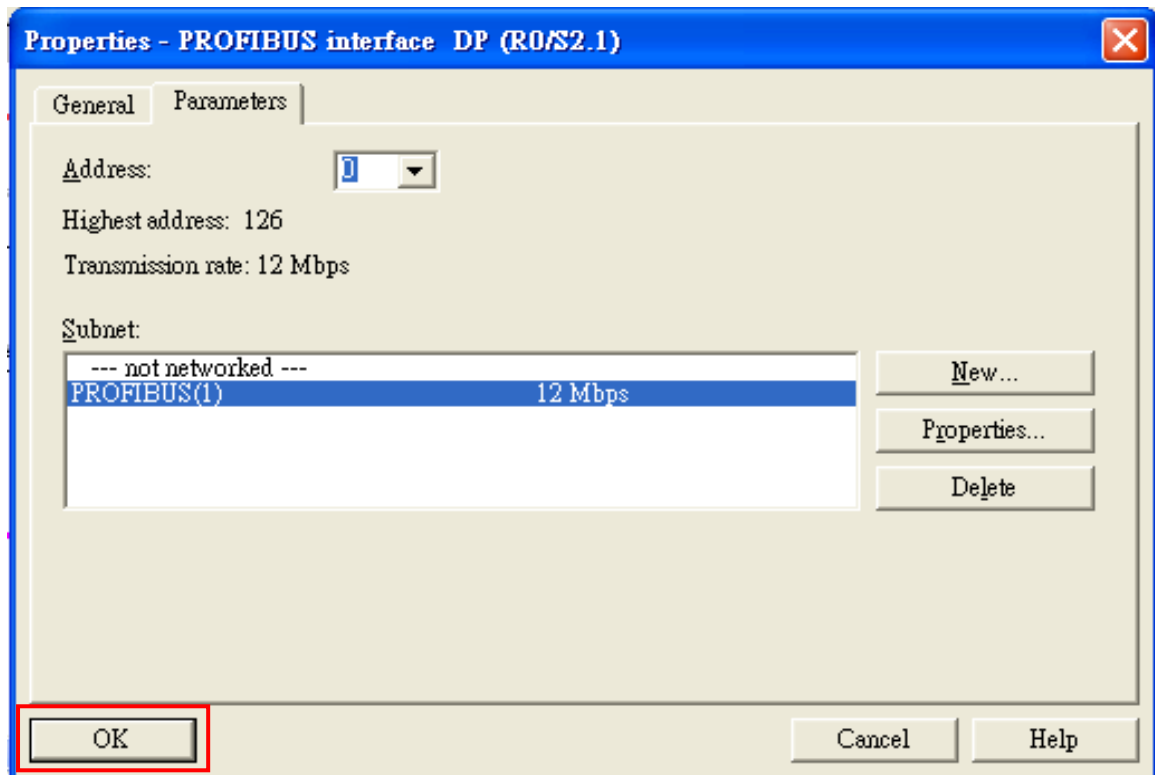


c. Select PROFIBUS Transmission Rate=12Mbps, Profile=DP and click "OK"



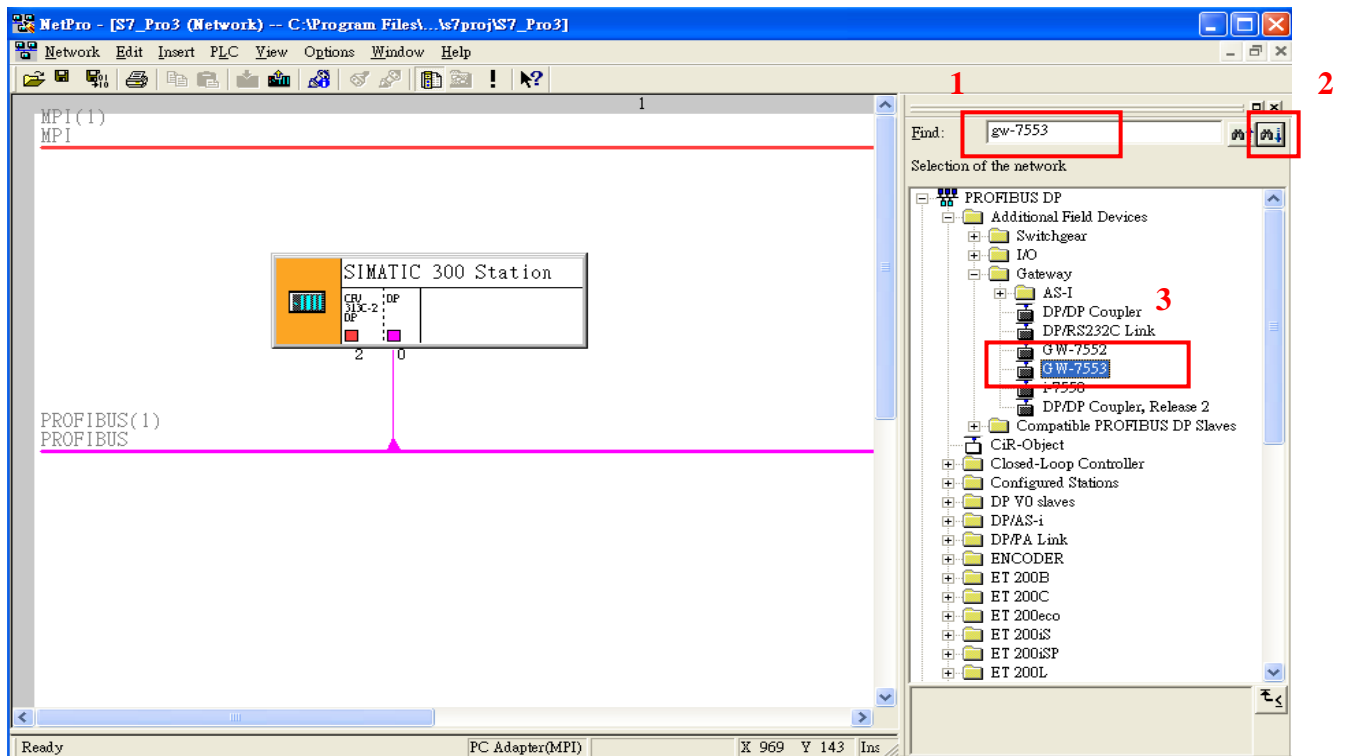


d. Click "OK"

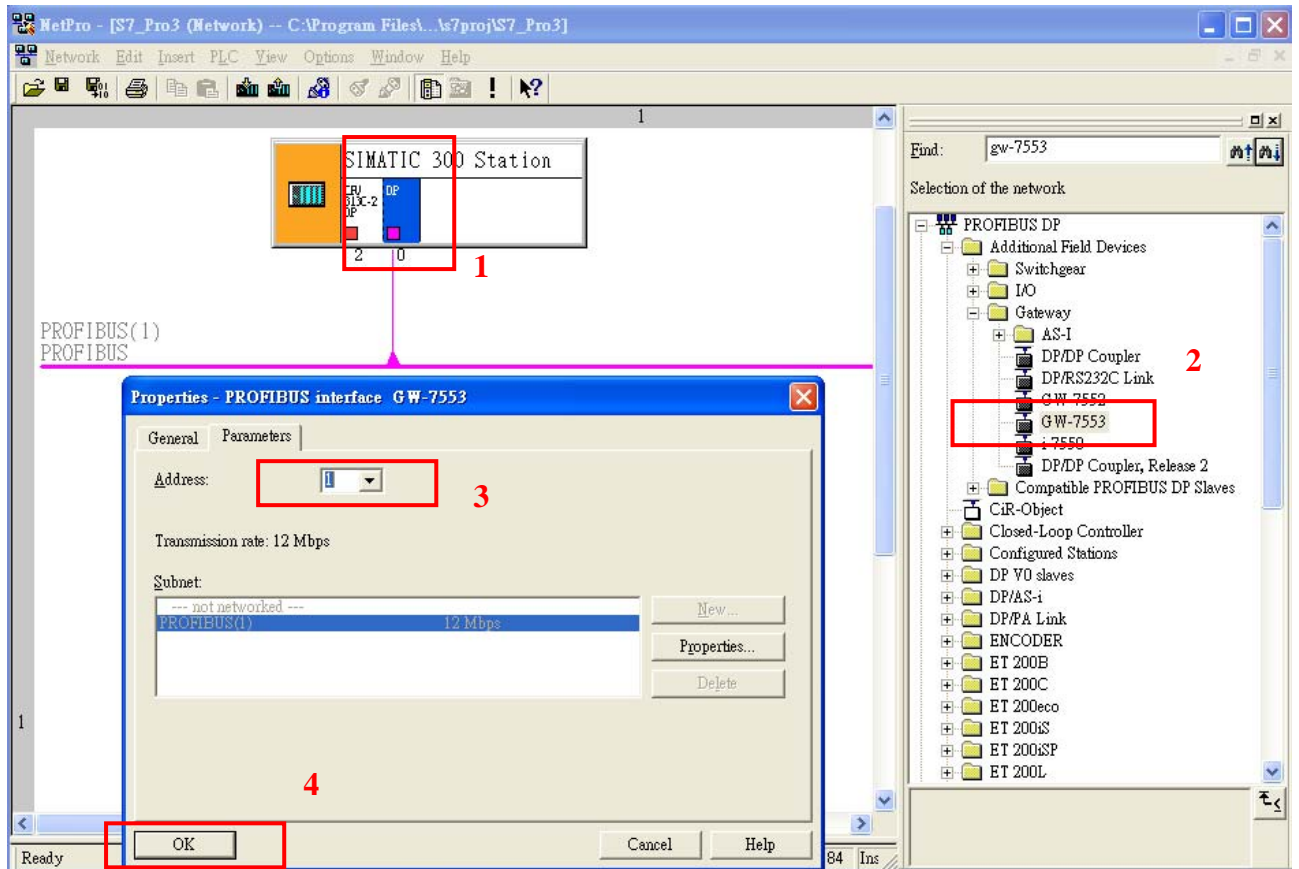


## 8. Add GW-7553

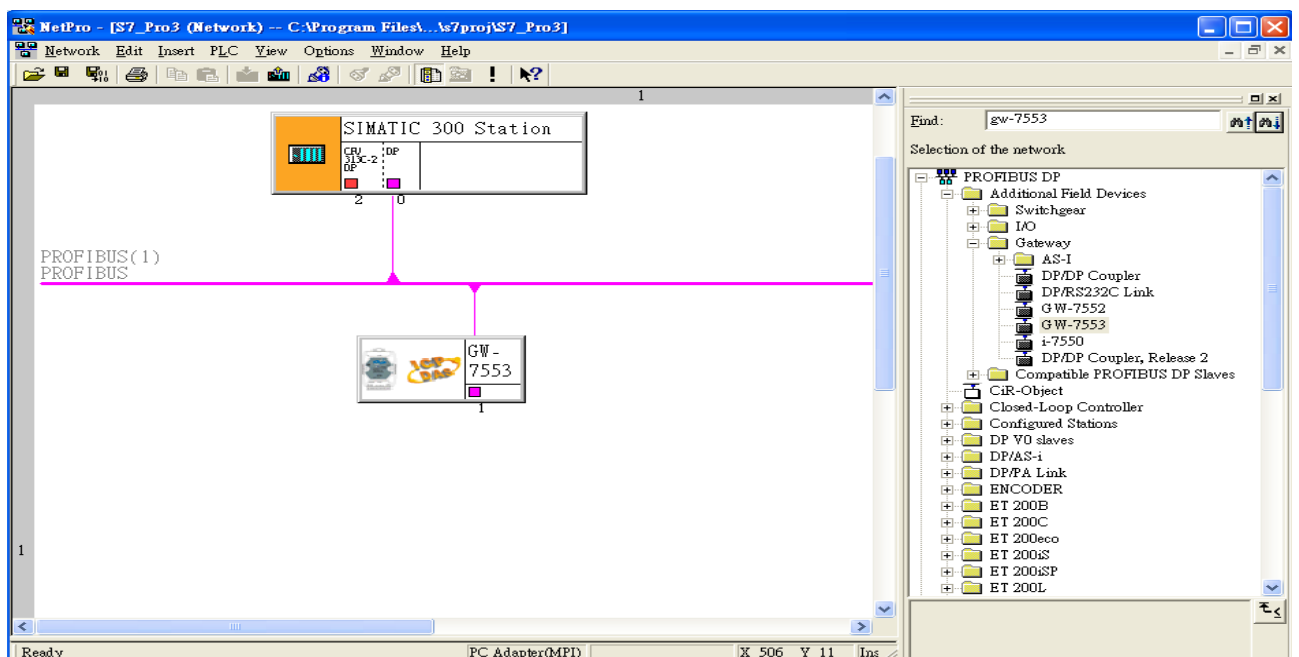
a. Search GW-7553 module



- b. Select DP module and double click GW-7553's icon then set GW-7553's address in the "Properties" dialog (this address must be the same with dip switch of the GW-7553 module and default is "1") then click "OK"

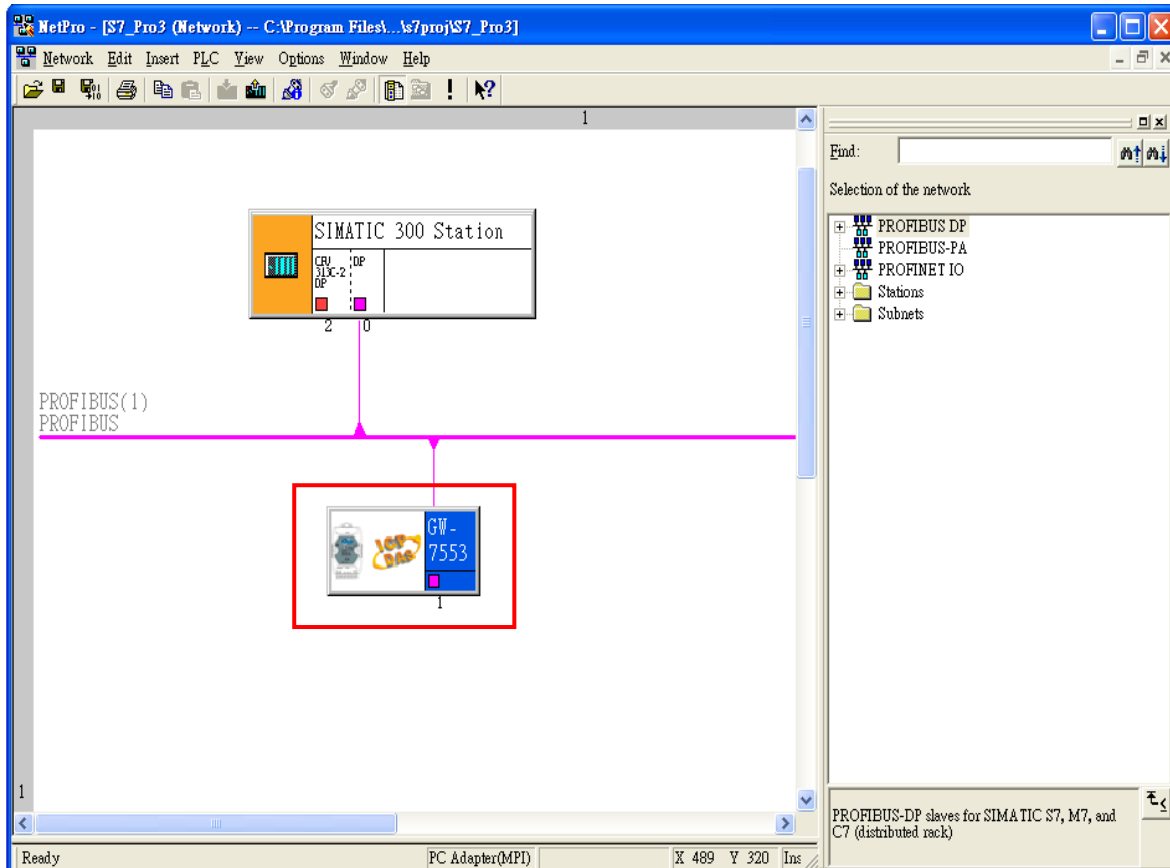


- c. GW-7553 add completely

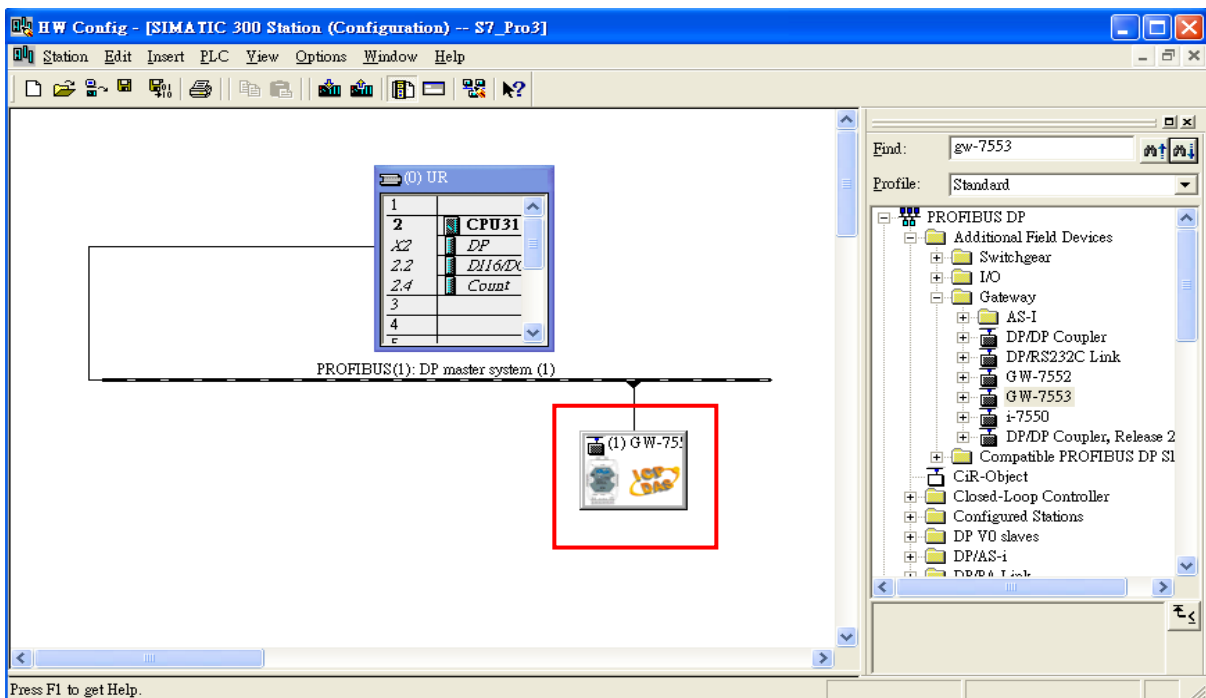


## 9. GW-7553 parameter setup

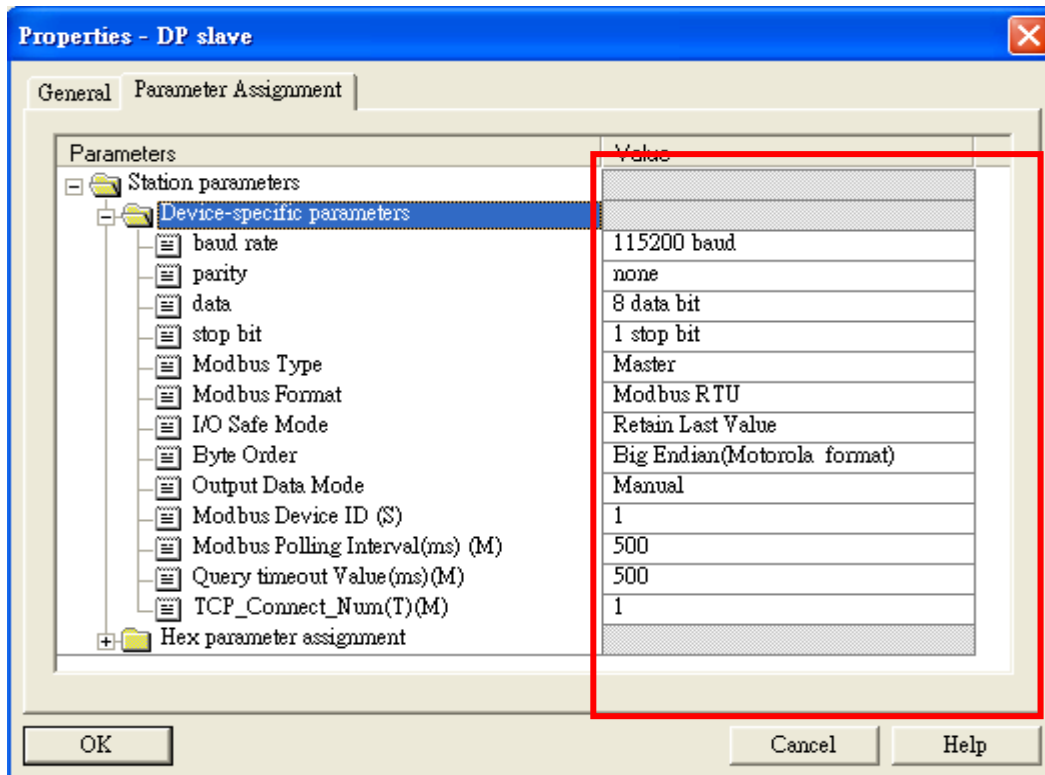
a. Double click GW-7553's icon to open "HW Config"



b. Double click GW-7553's icon to open "Properties" dialog

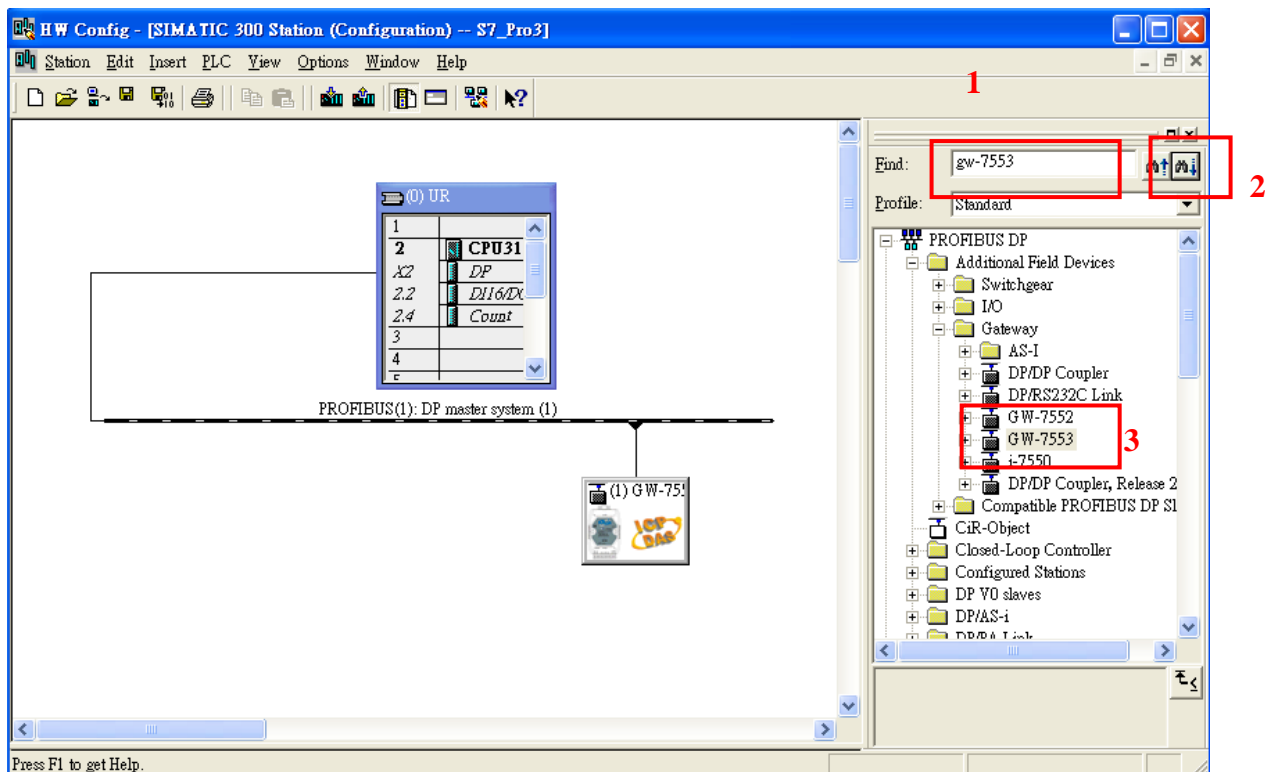


- c. Select “Device-specific parameters” folder and configure the settings (ex: baud rate, parity, data bit) and click”OK”.

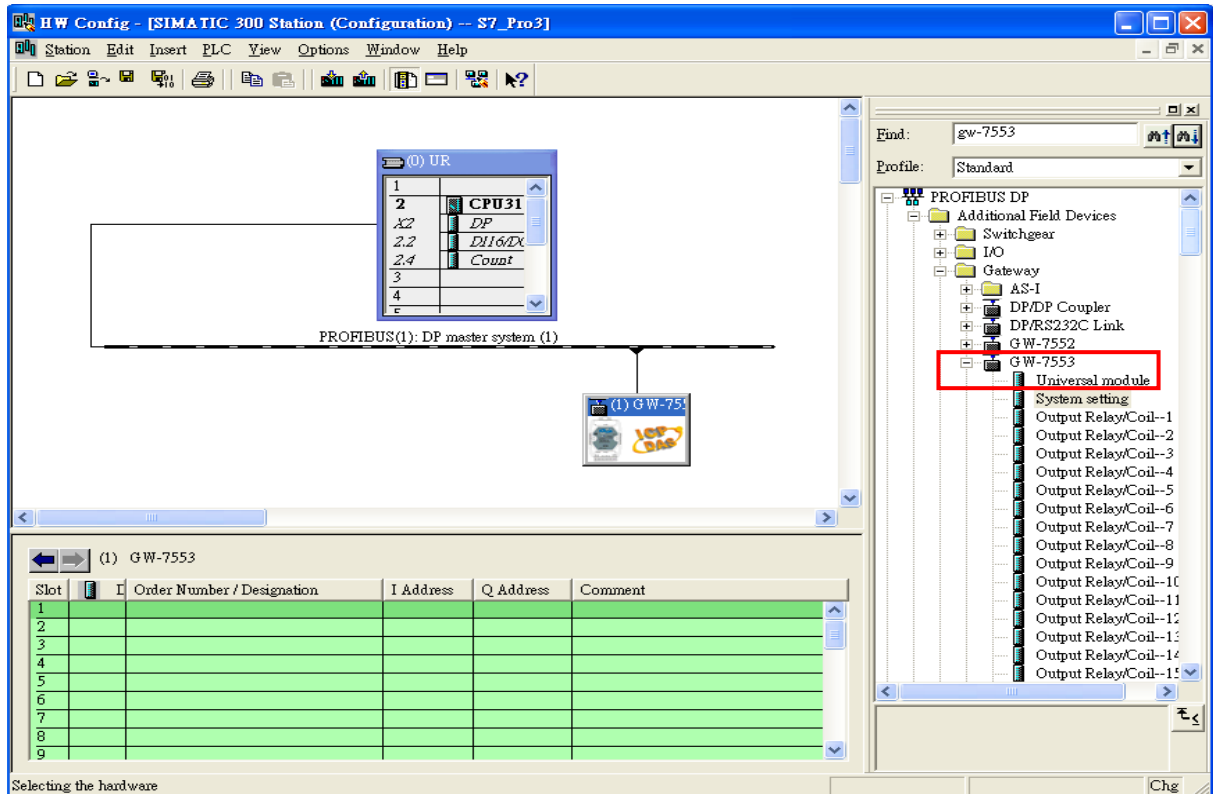


## 10.GW-7553 Modules module configuration

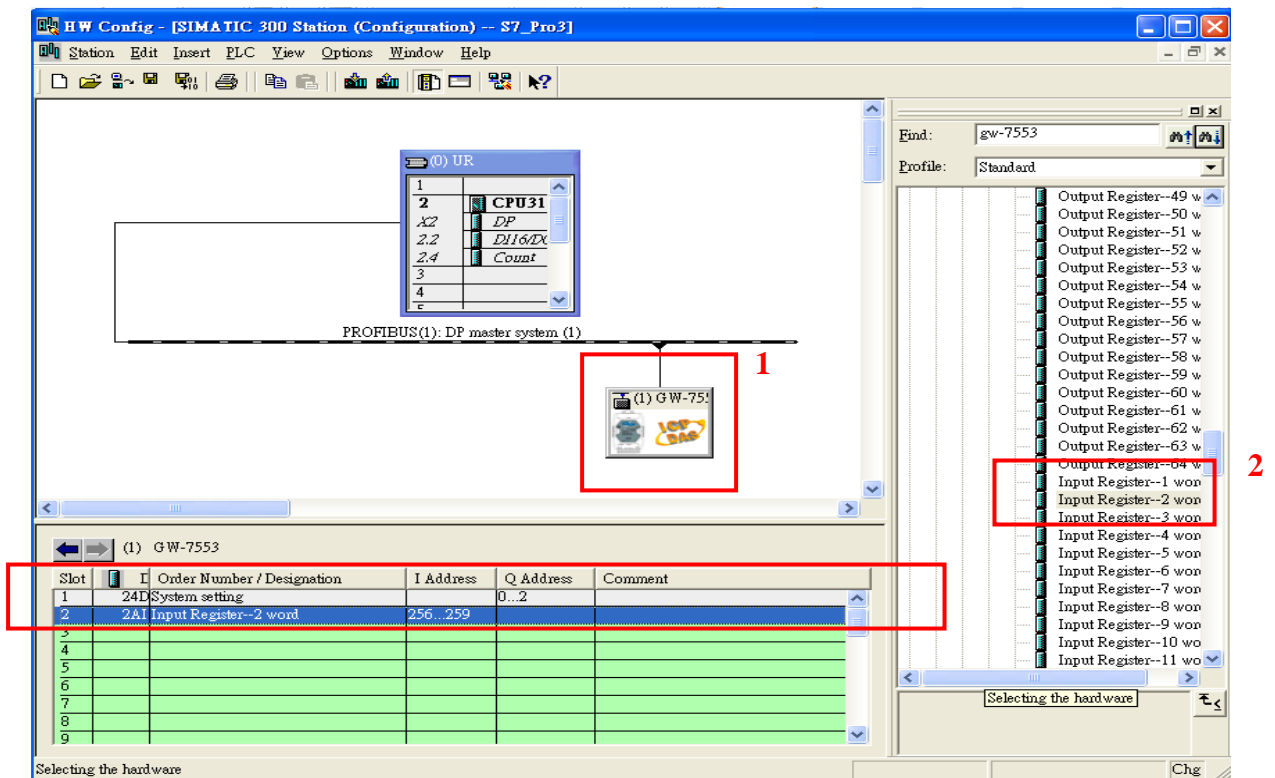
- a. Search GW-7553 module



b. Open GW-7553's folder

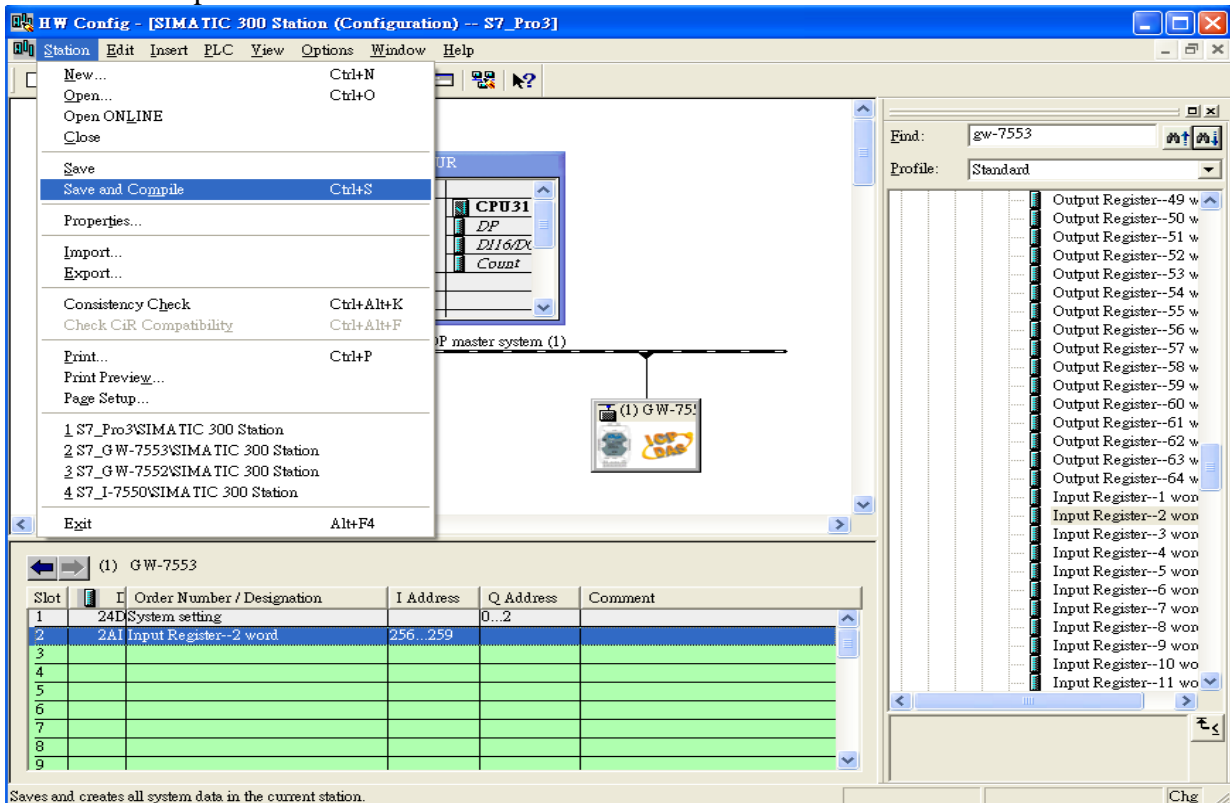


c. Click GW-7553 module and double click "System setting module" and select the IO modules that you need (ex: 2AI , 2word)



11. You have completed GW-7553's configuration and you just need to download the configuration to Siemens PLC ◦

a. save and compile



b. Download to PLC

